

JOIN OUR SUMMER SCHOOL 2018

LEARNING **LISBOA**
BY HEART

MUSIC

THEATRE & FILM

PORTUGUESE
LANGUAGE & CULTURE



POLITÉCNICO
DE LISBOA

Olá!

Politécnico de Lisboa is a high-level institution of higher education whose aim is to create, convey and disseminate knowledge, culture, arts, science and technology of a professional nature by integrating study, lecturing, research and experimental development.

Internationalization is a strategic and evolving focal point at Politécnico de Lisboa. We strive to project an international image through strengthening our existing partnerships and seeking out new forms of international cooperation.

We want to contribute to prepare community-minded citizens who have a wide general knowledge of the world and who are able to live and work in a global market.

Nowadays, our students, teachers, or staff members can choose among approximately 400 high-level partner institutions for his or her mobility experience, and we receive around 500 people, each year, regarding this partnerships.

In the area of research, development and artistic creation, IPL supports participation in international projects, facilitated by its presence in various prestigious international networks.

We believe that internationalization contributes to improve skills and to expand international recognition of our institution in the global market of knowledge and arts.

At IPL – Politécnico de Lisboa we believe in internationalization as an institutional imperative and a powerful instrument for reflection for the ongoing enhancement of our commitment and for the defining of our own identity.

POLITÉCNICO DE LISBOA SUMMER SCHOOL 2018 PROGRAM DETAILS

WEEK 1	02 to 06 JULY	THEATRE & FILM
WEEK 2	09 to 13 JULY	MUSIC
WEEK 3	16 to 20 JULY	PORTUGUESE LANGUAGE & CULTURE

ONE WEEK FEE: 200 € EU citizens
350 € Non EU citizens

OPTIONS

Social program: 80 € / week

Housing: 250 € / 7 nights in university residence

ADMISSION: Fulfilling general requirements for accessing higher education institutions and specific requirements if mentioned.

APPLICATION: Until June 20, with submission of short resumé through the email: grima@sp.ipl.pt

Minimum number of admissions: Theatre/Film – 6

LEARNING LISBOA BY HEART

"Cultural, cutting edge and full of character: the Portuguese capital lays on centuries of history, then throws in barrios that bubble with bohemian flair and forward-thinking projects such as the transformation of neglected buildings by large-scale urban artworks [...]"

© Independent / Sophie Lam – 48 Hours: Lisbon

"Meander up one of Lisbon's loftiest hills to the Moorish Alfama neighbourhood, where sunset-amber walls and dusty lanes orbit the Arabic-cum-medieval castle that looms, omnipresent, over the terracotta rooftops of the city below. At the imperial Belém waterfront, Portugal's "Age of Discoveries" is celebrated in the form of a lavish monastery and dazzling river-facing statues, built with the coin of one of the most ostentatious colonial empires in history. [...]"

© Telegraph Media Group Limited 2017 / The Telegraph Travel expert guide to Lisbon

"I wandered into the hills of Alfama, sans map. Later I learned that everything was a straight shot from my hostel, but I didn't care. Getting lost alone in those windy and narrow streets was a dream. Finding the landmarks and seeing the magical view by just following my intuition was far more appealing than analyzing a map. [...]"

© Huffington Post / Sonya Matejko – Why Lisbon Changed My Mind About Traveling Alone

"Beautiful decay seems to characterise the aesthetic of most of Lisbon's nightlife quarters. But despite the faded facades and vacant lots that scatter the Portuguese capital, the music emerging from between the cracks is sharp and modern, fusing contemporary African and European influences with a playful fluency unique to the city. [...]"

© Courtesy of Guardian News & Media Ltd / Will Coldwell – Lisbon's new clubbing scene



POLITÉCNICO
DE LISBOA

JOIN OUR SUMMER SCHOOL 2018 LEARNING LISBOA BY HEART

**THEATRE
& FILM**



**POLITÉCNICO
DE LISBOA**

ESTC – Lisbon Theatre and Film School

MISE-EN-SCÈNE AND THE ACTOR

FILM

It will be the purpose of these sessions to question the place of the actor in the creation of the film, placing our attention in the several moments of that creative process.

Week: 02 to 06 JULY

MONDAY: 10am – 1pm / 2pm – 4.30pm

How does the actor shape the writing process? The examples of Cassavetes, Mike Leigh, Abel Ferrara will be studied, among others. How does the actor's movements relate to the camera's and which is conditioned by which? What can be the role of the actor on the mise-en-scène? How can the standard working procedures in film and theatre relate, and how can they benefit from a mutual knowledge?

TUESDAY: 10am – 1pm / 2pm – 4.30pm

1. How to identify the proper stages of the life of an independent film.
2. Choosing and developing the right story.
3. All the types financing available for film today.
4. How to prepare a film project for the market.
5. Working with festivals and markets.
6. Up and coming types of funding.
7. Marketing for independent films: from the idea to distribution.
8. Arthouse and genre films.
9. Getting away with murder: ways of making your film relevant



PERFORMATIVITY THEATRE

In this seminar, we want to create the environment for a collaborative and creative relation whose basic lines are proposed in advance, working as an input and a creative constraint.



Week: 02 to 06 JULY

WEDNESDAY AND THURSDAY: 10am – 1pm / 2pm – 4.30pm

During these two days the Theatre Department of ESTC proposes two different Workshops in two different classrooms, each one of them linked with a theme:

SPACE, LIGHT/SOUND and IMAGE /VIDEO, exploring the notion of PERFORMATIVITY.

HOW IT SHOULD WORK

These basic lines are different and specific to each group, but they are of elemental importance and significance in the theatrical creation – Stage/Floor; Light/Sound; Image - and they should work as a constraint to the kind of work and object/ presentation that eventually will come out, during the seminar. To each group is assigned one of these three basic elements, being the room, in which the work is going to happen, specially prepared for that purpose. There will be other specific materials to work with. In each one of the three rooms, there will be one or two ESTC teacher in order to facilitate the work and communication.

We will select a brief text, common to all groups that can work as a trigger for unblocking the initial moment of the work. This text can be used as semantic, phonetic, musical material; as a creator of a plastic atmosphere etc.

FRIDAY: Social program (optional)

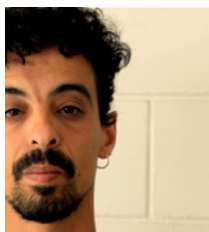
Tour to Cascais and Sintra – including a Surfing lesson

Álvaro Correia

Actor/Director since 1989
Head of the Theatre
Department at ESTC

**João Calixto**

Theatre Stage Designer
Teaches Stage Design and
Objects since 2005

**THEATRE TEACHERS**

Click to read
the Theatre
teachers bios

José Pedro Caiado

Author/Performer, and
Professor at the Theatre
Department of ESTC

**Mariana Sá Nogueira**

Theatre, Set and
Costume Designer

**Miguel Cruz**

Scenic Lighting Designer,
Technical Direction and
Production at ESTC

**Paulo Leite**

Film Producer. Film and
Theatre teacher at ESTC

**Luís Miguel Fonseca**

Producer and Screen Writer.
Film and Theatre teacher at ESTC

**FILM TEACHERS**

Click to read
the Film
teachers bios

FEE: 200 € EU citizens
350 € Non EU citizens

OPTIONS:

Social program: 80 € / week

Housing: 250 € / 7 nights in university residence

ADMISSION: Fulfilling general requirements for
accessing higher education institutions and specific
requirements if mentioned.

APPLICATION: Until June 20, with submission of short
resumé through the email: grima@sp.ipl.pt

Minimum number of admissions – Theatre/Film: **6**

JOIN OUR SUMMER SCHOOL 2018 LEARNING **LISBOA** BY HEART

MUSIC



POLITÉCNICO
DE LISBOA

ESML – Lisbon School of Music

MUSIC SUMMER COURSE

These courses consist of masterclasses of 2 to 4 days and cover the various Execution, Jazz and Composition Branches, being guided by the prestigious ESML teachers.

Week: 09 to 13 JULY

Monday to Thursday: 09am – 1pm / 2pm – 6pm

Composition	Harp	Saxophone	Violin
Jazz	Early Music	French Horn	Viola
Voice	Flute	Trumpet	Cello
Piano	Oboe	Trombone	Double Bass
Organ	Clarinet	Tuba	
Guitar	Bassoon	Percussion	

To these courses can apply professional musicians, advanced students of specialized higher education in music, and finalists of the Conservatories. Depending on the number of participants, those registered as performers may be subject to a previous selection audition. Anyone not selected may also participate as observers.

FRIDAY: Social program (optional)

Tour to Arrábida – including visit to a Winery and wine tasting





ESML – Lisbon School of Music

SUMMER SCHOOL TEACHERS:

Composition	António Pinho Vargas; Carlos Caires; Carlos Marecos; João Madureira; Luis Tinoco; Sérgio Azevedo
Jazz	Afonso Pais de Sousa; André Sousa Machado; Bruno Santos; Desidério Lázaro; Filipe Melo; Gonçalo Marques; João Moreira; Lars Arens; Nelson Cascais; Óscar Marcelino da Graça; Pedro Moreira; Bernardo Moreira; Bruno Pedroso; João Paulo Esteves da Silva; Maria João Grancha; Ricardo Pinheiro
Voice	Luis Madureira; Sílvia Mateus; Armando Possante
Piano	Jorge Moyano; Miguel Henriques; Paulo Pacheco
Organ	António Esteireiro; João Vaz
Guitar	António Jorge Gonçalves; João Pedro Duarte
Harp	Ana Castanhito
Early Music	Ana Mafalda Castro; Pedro Castro; Pedro Couto Soares
Flute	Anthony Pringsheim; Nuno Ivo Cruz; Nuno Inácio; Olavo Barros
Oboe	Andrew Swinnerton; Pedro Ribeiro
Clarinet	Francisco Ribeiro; Manuel Jerónimo; Paulo Gaspar; Rui Martins
Bassoon	Ricardo Ramos
Saxophone	José Massarrão
French Horn	Paulo Guerreiro
Trumpet	David Burt; Stephen Mason
Trombone	Hugo Assunção
Tuba	Adélio Carneiro
Percussion	Jeffery Davis; Pedro Carneiro; Richard Buckley
Violin	Ana Beatriz Manzanilla; Bin Chao; Tamila Kharambura; Tiago Neto
Viola	Pedro Muñoz; Samuel Barsegian
Cello	Levon Mouradian; Paulo Gaio Lima
Double Bass	Manuel Rêgo

Click to read
the Music
teachers bios

FEE: **200 € EU citizens**
 350 € Non EU citizens

OPTIONS:

Social program: 80 € / week

Housing: 250 € / 7 nights in university residence

ADMISSION: Fulfilling general requirements for accessing higher education institutions and specific requirements if mentioned.

APPLICATION: Until June 20,
with submission of short resumé through the
email: grima@sp.ipl.pt

JOIN OUR SUMMER SCHOOL 2018 LEARNING **LISBOA** BY HEART

PORTUGUESE
LANGUAGE
& CULTURE



POLITÉCNICO
DE LISBOA

Centro de Línguas e Cultura

PORTUGUESE LANGUAGE AND CULTURE

The IPL Summer School is aimed at anyone who wishes to learn Portuguese language and culture. In addition to language learning, the course contemplates sessions on folk culture, art, dance, among other aspects. Cultural activities and visits are planned to an half day event on Friday.

Week: 16 to 20 JULY

	Monday	Tuesday	Wednesday	Thursday	Friday
10.00 13.00	Portuguese Language Course	Portuguese Language Course	Portuguese Language Course	Portuguese Language Course	Portuguese Language Course (until 13h30)
13.00 14.00	Lunch Break	Lunch Break	Lunch Break	Lunch Break	Lunch Break
14h 15h	Portuguese Language Workshop	Portuguese Language Workshop	Portuguese Language Workshop	Portuguese Language Workshop	Cultural activities and visits
15h15 17h	Identity and folklore Rui Simões	Popular music in contemporary Portugal Pedro Moreira ESELx Portuguese traditional dances Vera Amorim	Contemporary Portuguese Art: Multiples perspectives on visual arts José Regatão ESELx	Modern Portugal – From Dictatorship to Democracy Maria Inácia Rezola	Fado Museum Aljube Museum
20h					Social Dinner

The afternoon sessions will be held in English.

Vera Amorim

PhD in Artistic Studies by the University of Lisbon, holds the Specialist Degree in Dance by IPL



Pedro Moreira

Invited Adjunct Professor at Lisbon School of Education - Lisbon Polytechnic Institute in the Arts department



José Pedro Regatão

Ph.D. in Fine Arts Studies, is an artist and fine arts teacher at Escola Superior de Educação de Lisboa (IPL)



Maria Inácia Rezola

Guest professor of Contemporary History at the School for Media and Communication (ESCS-IPL)



Rui Almeida Simões

Teacher at the School of Mass Media and Communication, he coordinates the Social Sciences area



Click to
read the
Portuguese
teachers bios





Centro de Línguas e Cultura

PORTUGUESE LANGUAGE AND CULTURE

FEE: 200 € EU citizens
350 € Non EU citizens

OPTIONS:

Social program: 80 € / week

Housing: 250 € / 7 nights in university residence

ADMISSION: Fulfilling general requirements for accessing higher education institutions and specific requirements if mentioned.

APPLICATION: Until June 20, with submission of short resumé through the email: grima@sp.ipl.pt