



 **IPL** INSTITUTO
POLITÉCNICO
DE LISBOA

Politécnico de Lisboa

“We manage current challenges
with our eyes on the future”



Welcome to Politécnico de Lisboa

**ARTS
HEALTH
SCIENCES
EDUCATION**

**BUSINESS
SCIENCES
COMMUNICATION
ENGINEERING**

13,000
STUDENTS
1,262
TEACHING STAFF
388
NON - TEACHING
STAFF

40
UNDERGRADUATE
PROGRAMS
46
MASTERS
PROGRAMS
30
POSTGRADUATE
PROGRAMS

Located in the metropolitan area of Lisbon and composed of eight schools of higher education, IPL- Politécnico de Lisboa is a public institution with a long history in the field of higher education.

IPL is composed of the following schools:

- ◆ School of Communication and Media Studies;
- ◆ School of Dance;
- ◆ Lisbon School of Education;
- ◆ Lisbon School of Music;
- ◆ Lisbon Theatre and Film School;
- ◆ Lisbon School of Health Technology;
- ◆ Lisbon Accounting and Business School;
- ◆ Lisbon Engineering School.

IPL provides Undergraduate, Masters, Postgraduate and Doctoral programs (in partnership with universities); it offers a diversified range of courses in Arts, Business Sciences, Health Sciences, Communication, Education and Engineering.

IPL's primary objective has always been to provide academic instruction for employability and for continued

professional development, founded on a secure knowledge of science, arts and culture.

Our Institution contributes to national development by educating professionals whose abilities and value as employees have been nationally and internationally recognized.

IPL provides education that develops the whole person by promoting citizenship and encouraging the active participation of our students in their institution and in their community.

We are committed to strengthening international relationships, especially with our partners in the European Union and in Portuguese - speaking countries.

IPL- Politécnico de Lisboa promotes the following institutional values:

1. academic excellence;
2. excellence in research and development;
3. openness and engagement with society ;
4. social commitment;
5. a merit-based culture;
6. strengthening international ties through cooperation and scientific exchange with European and Portuguese-speaking countries.

IPL- POLITÉCNICO DE LISBOA

WHERE WE ARE



ESTC - LISBON THEATRE AND FILM SCHOOL



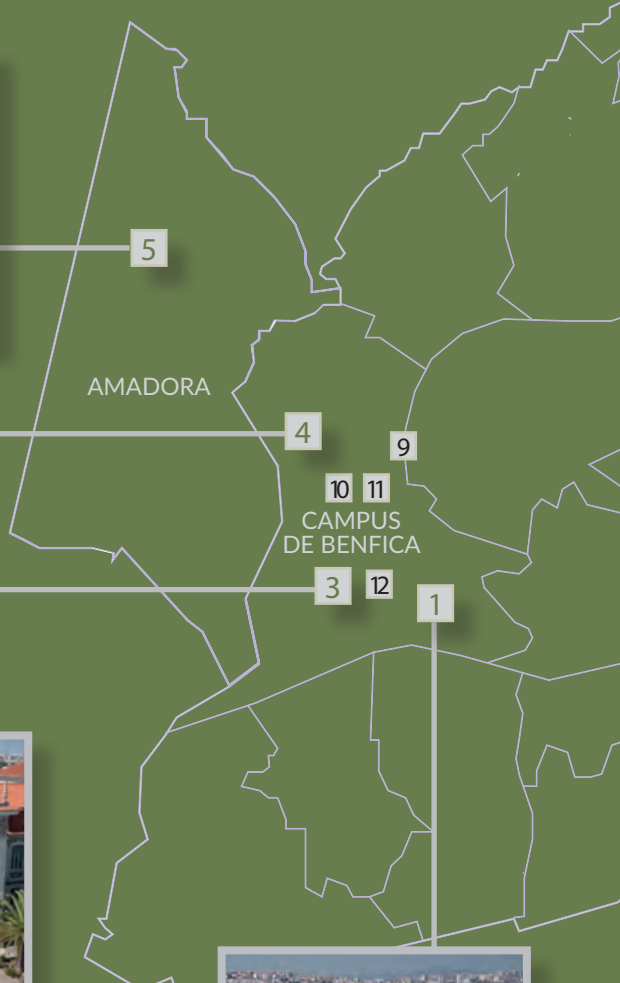
ESML - LISBON SCHOOL OF MUSIC



ESELx - LISBON SCHOOL OF EDUCATION



ESCS - SCHOOL OF COMMUNICATION AND MEDIA STUDIES



SERVICES

9 IPL PRESIDENCY SERVICES

10 IPL SAS SOCIAL SERVICES - IPL

11 IPL ACADEMIC FEDERATION - FAIPL

12 e 13 OCCUPATIONAL HEALTH SERVICE

14 MARIA BEATRIZ RESIDENCE

LISBOA



13

6

PARQUE
DAS
NAÇÕES

14

MARVILA

8

AVENIDAS
NOVAS

7

BAIRRO
ALTO

2

RIO TEJO



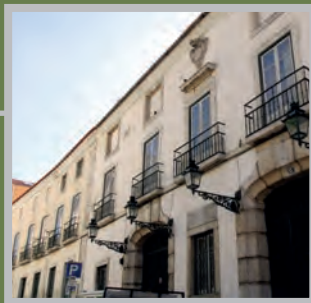
**ESTeSL - LISBON SCHOOL OF HEALTH
TECHNOLOGY**



**ISEL - LISBON ENGINEERING
SCHOOL**



**ISCAL - LISBON ACCOUNTING AND
BUSINESS SCHOOL**



ESD - SCHOOL OF DANCE

SCHOOLS OF HIGHER EDUCATION

- 1 ESCS - SCHOOL OF COMMUNICATION AND MEDIA STUDIES
- 2 ESD - SCHOOL OF DANCE
- 3 ESELx - LISBON SCHOOL OF EDUCATION
- 4 ESML - LISBON SCHOOL OF MUSIC
- 5 ESTC - LISBON THEATRE AND FILM SCHOOL
- 6 ESTeSL - LISBON SCHOOL OF HEALTH TECHNOLOGY
- 7 ISCAL - LISBON ACCOUNTING AND BUSINESS SCHOOL
- 8 ISEL - LISBON ENGINEERING SCHOOL



School of Communication and Media Studies

[ESCS - School of Communication and Media Studies](#), created in 1987, is a long standing, prestigious teaching and research institution that focuses on media and communication in Portugal. It is situated on the Benfica campus of IPL- Politécnico de Lisboa.

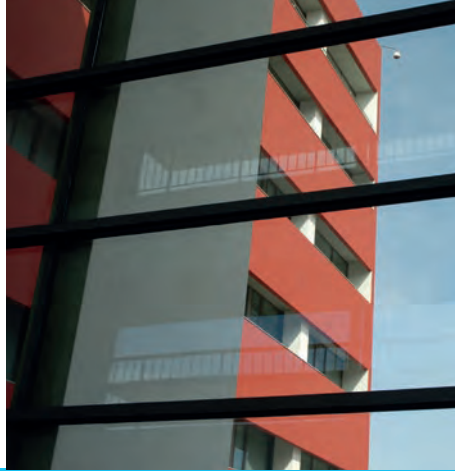
The education provided by ESCS is supported by science and by innovation, blending conceptual aspects with applied technology in response to market trends. Teaching at ESCS incorporates both theoretical and practical components, offering students direct contact with professional reality through involvement in partnerships with public and private organizations.

ESCS emphasizes the importance of providing access to conditions and equipment that are identical to those in the labor market, facilitating the smooth and efficient integration of students into the professional arena. The school is equipped with television and radio studios, a multimedia newsroom, video editing and post-production rooms and an organizational communication laboratory.

The highly qualified School of Communication and Media Studies teaching staff is composed of PhD professors, specialists and professionals with recognized involvement in the labor market. As well as offering Undergraduate, Masters and Postgraduate degrees, ESCS provides Doctoral programs in association with universities with whom it co-designs courses.

The School of Communication and Media Studies is linked to a vast network of international partners and is involved in the exchange of students, teaching staff and non-teaching staff. Being permanently open to society, the school is able to establish agreements with entities in the area of media and communication, thereby assisting graduates to establish contacts and more easily enter the professional market.

The success of School of Communication and Media Studies students and graduates is clearly recognized as they enter the labor market, along with their achievements in winning national and international awards in a variety of areas in the media and communication field.



School of Communication and Media Studies



ESCOLA SUPERIOR
DE COMUNICAÇÃO SOCIAL

CONTACTS

IPL Benfica Campus
1549-014 Lisbon
TEL + 351 217 119 000
servicos_academicos@escs.ipl.pt
www.escs.ipl.pt

UNDERGRADUATE PROGRAMS

Advertising and Marketing
Audiovisual and Multimedia
Journalism
Public Relations and Corporate Communication

MASTERS PROGRAMS

Advertising and Marketing
Audiovisual and Multimedia
Journalism
Public Relations Strategic Management

PHD PROGRAMS

Communication Sciences
in partnership with ISCTE – Instituto Universitário de Lisboa

POSTGRADUATE PROGRAMS

Branding and Content Marketing
Communication and Public Affairs
Creative Industries: Strategies, Policies
and Development
Industries and Creative Cultures: Management
and Strategies
Storytelling



School of Dance

ESD - School of Dance is situated in the historic center of the city of Lisbon, in Bairro Alto. It occupies the former palace of Marquês de Pombal.

ESD was established in 1983 during the reform of artistic education administered at the National Conservatory, with its origins dating back to 1836 when, by royal decree, Queen Maria II founded the General Conservatory for Dramatic Arts following a proposal made by Almeida Garrett. It was incorporated into IPL- Politécnico de Lisboa in 1985.

ESD responds to changes in the educational, artistic and professional panorama through constant updating of its teaching staff and an ongoing relationship with the national and international community of artists and educators.

The main goal of ESD is to provide the artist with a wide-ranging education through the teaching of a variety of common aptitudes and specific skills that will lead to a diversity of career prospects. Additionally, ESD invests in training teachers through courses in specialized dance instruction. Student instruction is

based on science and on the integration of cultural contexts supported by a strong applied (practical) component. This brings ESD students recognition and real-life experience in the artistic world through the creation and organization of presentations and performances. Quality of instruction is reflected in the entry rate of ESD graduates into the labor market.

ESD has established partnerships and agreements with various entities that permit and support student participation in projects that are included in the academic program.

ESD carries out exchanges with schools in several European countries through the Erasmus+ Program, involving students, teaching staff and non-teaching staff. Furthermore, the School of Dance is actively involved in partnerships and international networks, regularly participating in masterclasses with internationally recognized dancers and choreographers.

ESD generates projects, agreements and exchanges, creating new courses and revising existing ones in response to the needs and challenges of the field of dance.



School of Dance



UNDERGRADUATE PROGRAMS

Dance

MASTERS PROGRAMS

Dance Teacher Training

PHD PROGRAMS

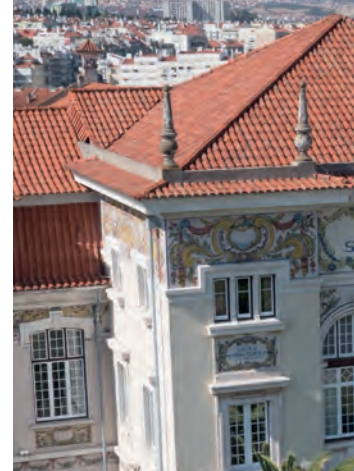
Performing Arts and Image in Motion

in partnership with Universidade de Lisboa

es **d** escola superior de dança
INSTITUTO POLITÉCNICO DE LISBOA

CONTACTS

Rua Academia das Ciências, n.º 7
1200-003 Lisbon
TEL + 351 213 244 770/4
geral@esd.ipl.pt
www.esd.ipl.pt



Lisbon School of Education

ESELx - Lisbon School of Education was founded in 1979 and, upon nomination by the induction committee, was incorporated into IPL- Politécnico de Lisboa in 1985. Despite its young age, its origins reveal a proud history and a pedagogical tradition inherited from two training institutes for teachers and educators: Lisbon School of Primary Teacher Education (Escola do Magistério Primário de Lisboa) and the António Aurélio da Costa Ferreira Institute.

ESELx is located at the Benfica campus of IPL- Politécnico de Lisboa.

ESELx is dedicated to teaching, research and community service in the areas of education and social and cultural involvement. It works in collaboration with national and foreign entities that have similar educational projects. Furthermore, with regard to community interaction, a significant number of training initiatives for teachers and educators are in progress to follow up on requests made by various institutions. Its pedagogical culture is guided by the dictates of participation, critical reflection, lifelong training and teamwork.

ESELx promotes the creation and consolidation of ties among education, community and human development.

Lisbon School of Education has fostered a flexible, evolving educational approach, with a diversity of learning options as one of its core features. Although its original and fundamental mission is teacher training, it has come to offer other kinds of instruction designed for different segments of the labor market that have different output profiles. These include instruction in sociocultural animation, visual arts and technology, artistic and cultural mediation and community music.

ESELx possesses a highly qualified teaching staff composed of PhD professors and specialists who are recognized in the academic and professional fields.

At ESELx, there is a growing number of exchange programs for students, teaching staff and non-teaching staff through the Erasmus+ program and through involvement in national and international partnerships.



Lisbon School of Education



**ESCOLA SUPERIOR
DE EDUCAÇÃO
DE LISBOA**

CONTACTS

IPL Benfica Campus
1549-003 Lisbon
TEL + 351 217 115 500
eselx@eselx.ipl.pt
www.eselx.ipl.pt

UNDERGRADUATE PROGRAMS

Artistic and Cultural Mediation
Basic Education
Community Music
in association with ESML- Lisbon School of Music
Sociocultural Community Development
Visual Arts and Technologies

POSTGRADUATE PROGRAMS

Daycare and other Equipment
for children from 0 to 3
Education for Health
Puppets and Animated Forms
Storytelling Animation

MASTERS PROGRAMS

Artistic Education
Didactics of Portuguese in the 1st and 2nd Cycles of
Basic Education
Educational Administration
Environmental Education
Integrated Didactics of Portuguese Language,
Mathematics, Natural and Social Sciences
Mathematics Teaching in Pre-school Education and
the 1st and 2nd Cycles of Basic Education
Special Educational Needs
Pre-School Education
Teaching in the 1st Cycle of Basic Education and Maths
and Science in the 2nd Cycle of Basic Education
Teaching in the 1st Cycle of Basic Education and
Portuguese and History and Geography of Portugal
in the 2nd Cycle of Basic Education
Play, Education, Toys and Languages (*European Joint Master Degree*)
Social Education and Community Intervention
Supervision in Education
Zero to Three - Early Intervention



Lisbon School of Music

ESML - Lisbon School of Music, situated on the Benfica Campus of IPL- Politécnico de Lisboa, is housed in installations of recognized international prestige, also from an architectural standpoint. The building was honored with the 2008 Prémio Valmor awarded by Lisbon City Hall.

ESML was founded in 1983, during the reform of artistic education administered at the National Conservatory, having originated as part of the General Conservatory of Dramatic Arts and established in 1836 by royal decree of Queen Maria II following a proposal made by Almeida Garrett. It was incorporated into IPL- Politécnico de Lisboa in 1985.

Both nationally and abroad, ESML is considered an institutional benchmark, educating professionals in the area of music through solid training that embraces scientific, technical, technological and artistic elements.

ESML has consolidated its reputation and prestige in the last few years through the internationally recognized quality of its teaching staff and the vitality, diversity, outreach and high

quality of its artistic accomplishments in the areas of production, dissemination, education and research. In the pursuit of its mission, ESML encourages an academic environment and upholds exacting standards of education, providing students with wide-ranging instruction that equips them for entrepreneurial professional activity.

ESML is inserted within a network of highly esteemed European and world music schools of higher education and adheres to a strategy of internationalizing the education it offers through partnerships and exchanges.

ESML artistic production features chamber music groups with repertoires that range from early music to music of the 21st century. Also showcased are the symphonic orchestra, the wind orchestra, the jazz orchestra, the Gareguin Aroutiounian Camerata Group, and several choirs. Throughout the year instrumental groups and choirs perform at events and concerts held in the most celebrated venues in the country, illustrating the school's high level of professionalism along with the influence and diversity of the instruction provided.



Lisbon School of Music



**ESCOLA SUPERIOR
DE MÚSICA DE LISBOA**

CONTACTS

IPL Benfica Campus
1500-651 Lisboa
TEL + 351 213 224 940
s.academicos@esml.ipl.pt
www.esml.ipl.pt

UNDERGRADUATE PROGRAMS

Music

VARIATIONS

Composition, Conducting and Music Education

BRANCHES

Choral Conducting and Music Education

Composition

Winds Orchestra Conducting

Performance

BRANCHES

Early Music

Organ

Piano

Strings

Voice

Winds and Percussion

Jazz

Community Music

in association with ESELx - Lisbon School of Education

Music Technologies

MASTERS PROGRAMS

Music

Music Teacher Training

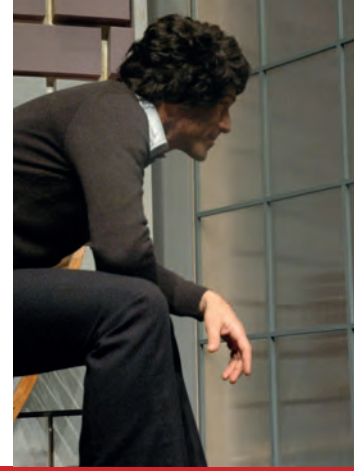
PhD PROGRAMS

Performing Arts and Image in Motion

in partnership with the Universidade de Lisboa

Musical Arts

in partnership with Nova University



Lisbon Theatre and Film School

ESTC - Lisbon Theatre and Film School, situated 15 minutes from the center of Lisbon in Amadora, instructs highly qualified professionals in the areas of theatre and film.

Created in 1983 and integrated within IPL- Politécnico de Lisboa in 1985, it is the result of the union of the former Dramatic School and the School of Cinema that had operated within the National Conservatory since 1972.

Lisbon Theatre and Film School is one of the most renowned schools in Portugal for the performing arts, acting, set and costume design and cinema – directing, film, script, editing, sound and production.

The school offers all requirements necessary for further education and for the technical, cultural, and artistic development of its students. It is recognized as a benchmark school by its national and foreign counterparts and is a member of the leading interschool associations in its area. It is also a member of the foremost international associations in its sphere of activity.

Along with its Undergraduate and Masters programs, ESTC partners with the University of Lisbon to offer a Doctoral course in Performing Arts and Image of Motion.

To frame and enhance its activities in research, development, innovation and artistic creation, ESTC founded the Arts and Communication Research Center (CIAC) with University of Algarve. This center is recognized by the Foundation for Science and Technology (FCT).

Every year ESTC produces and directs dozens of exercises, shows and films created by its students and exhibited free of charge to the community, either on ESTC premises or in theatres, museums, cinemas and at a variety of public venues.

Recognized nationally and internationally, ESTC has produced several young artists who have won awards at renowned festivals and exhibitions in the international cultural and artistic realm, with the festivals of Berlin and Cannes being two examples. Many Portuguese celebrities in the areas of theatre and cinema are graduates of ESTC.



Lisbon Theatre and Film School



CONTACTS

Avenida Marquês de Pombal, 22 B
2700-571 Amadora
TEL + 351 214 989 400
estc@estc.ipl.pt
www.estc.ipl.pt

UNDERGRADUATE PROGRAMS

Cinema

BRANCHES
Cinematography
Direction
Editing
Production
Screenwriting
Sound

Theatre

BRANCHES
Acting
Production and Management
Set and Costume Design

MASTERS PROGRAMS

Theatre

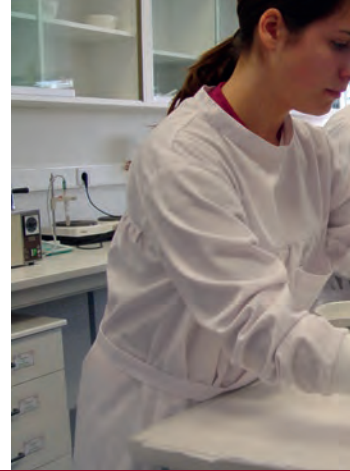
BRANCHES
Direction
Performing Arts
Production and Management
Set and Costume Design
Theatre and Community

Cinema Project Development

BRANCHES
Dramaturgy and Direction
Film Narratives
Post-production Technologies

PhD PROGRAMS

Performing Arts and Image in Motion
in partnership with Universidade de Lisboa



Lisbon School of Health Technology

ESTeSL - Lisbon School of Health Technology, located in the Parque das Nações, was founded in 1980 and incorporated into IPL- Politécnico de Lisboa in 2004.

ESTeSL carries out its main educational activities in the area of health science and technology, providing its graduates with the skills for exercising professions in disease prevention and in therapeutic intervention and rehabilitation.

ESTeSL provides state-of-the-art facilities and equipment for its courses and is proud of its highly qualified teaching staff. The resulting quality means that its name is recognized on a national and international level.

With unique multidisciplinary educational options in the field of health sciences and technologies, ESTeSL offers Undergraduate and Masters courses, as well as a variety of other continuing education programs.

ESTeSL actively participates in developing research projects and promoting the discovery of new scientific and

technical knowledge. Teaching staff and students form partnerships with other public and private institutions, on a national and international level, thereby contributing to the increasingly important role played by ESTeSL in its field of knowledge.

Lisbon School of Health Technology assigns special importance to social interaction activities by providing community services for promoting health and disease prevention among various sectors of the public and with the active involvement of its students.

While promoting science, culture and knowledge, ESTeSL structures its growth on such foundational pillars as excellence in teaching, internationalization and the dissemination of knowledge in society.

Lisbon School of Health Technology has gained the recognition of its national and international partners, claiming its place as a learning laboratory that successfully places highly qualified professionals into the labor market.



Lisbon School of Health Technology



ESCOLA SUPERIOR DE
TECNOLOGIA DA SAÚDE
DE LISBOA
INSTITUTO POLITÉCNICO DE LISBOA

CONTACTS

Av. D. João II, Lote 4.69.01
1990-096 Lisbon
TEL + 351 218 980 400
estes@estes.ipl.pt
www.estes.ipl.pt

UNDERGRADUATE PROGRAMS

Biomedical Laboratory Sciences
Clinical and Hospital Engineering
association with ISEL - Lisbon Engineering School
Clinical Physiology
Dietetics and Nutrition
Environmental Health
Medical Imaging and Radiotherapy
Orthoptics
Pharmacy
Physiotherapy
Prosthetics and Orthotics
in association with ISEL - Lisbon Engineering School

MASTERS PROGRAMS

Analysis and Control of Environmental Health Risks
in association with ISEL - Lisbon Engineering School
Biomedical Engineering
in association with ISEL - Lisbon Engineering School
Clinical Nutrition
partnership with Universidade de Lisboa
Health Technology Assessment and Management
partnership with University of Algarve
Occupational Health and Safety
Radiations Applied to Health Technologies

POST-GRADUATE PROGRAMS

Clinical Nutrition
Community Intervention and Primary Healthcare
Dermato-Functional Physiotherapy
Elderly Care Physiotherapy
Macroscopy in Pathological Anatomy
Manipulative and Osteopathic Theory
Occupational Health
Pediatric Physiotherapy
Quality in Healthcare
Sociology and Social Intervention in Healthcare
Women's Health Physiotherapy



Lisbon Accounting and Business School

ISCAL - Lisbon Accounting and Business School is located in central Lisbon and originated from the “Class of Commerce”, founded by the Marquês de Pombal in 1759. It was incorporated into IPL- Politécnico de Lisboa in 1988.

ISCAL pursues a mission to generate, teach and disseminate knowledge in the realm of accounting, management, administration, entrepreneurial finance, commerce and solicitor studies.

The instruction provided at Lisbon Accounting and Business School is a blend of solid scientific principles and essential practice in its area, leading to successful placement of its graduates in the labor market.

ISCAL's goal is for its graduates to continue to be, as they have since its founding, pillars of their professions within numerous companies and organizations nationwide, in accounting, administration and finance.

ISCAL has increased the rate of its internationalization

endeavors through its cooperation with countries in the European Union and with African countries whose official language is Portuguese (PALOP's), thereby gaining strategic partners through the participation of a growing number of teaching and non teaching staff and students in exchange and mobility programs.

Furthermore, it engages in community service, contributing to its reputation as a benchmark institution on the national and international stage.

The widespread employability of its graduates, the attractive professional options it offers and the positive response on the part of the labor market are among factors that contribute to Lisbon Accounting and Business School's growing reputation among a host of organizations.

Lisbon Accounting and Business School stands out as a privileged participant among market players. Its multidisciplinary course selection is designed to meet the needs of the business world and to respond to the ongoing demand for



Lisbon Accounting and Business School



ISCAL

INSTITUTO SUPERIOR DE CONTABILIDADE
E ADMINISTRAÇÃO DE LISBOA

CONTACTS

Av. Miguel Bombarda, 20
1069-035 LISBON
tel. + 351 217 984 500
iscal@iscal.ipl.pt
www.iscal.ipl.pt

UNDERGRADUATE PROGRAMS

Accounting and Administration

BRANCHES:

Accounting

Management and Public Administration

Taxation

Corporate Finance

International Business

Management

Solicitor

POSTGRADUATE PROGRAMS

Accounting and Public Administration

Sports Law Management

MASTERS PROGRAMS

Accounting

Auditing

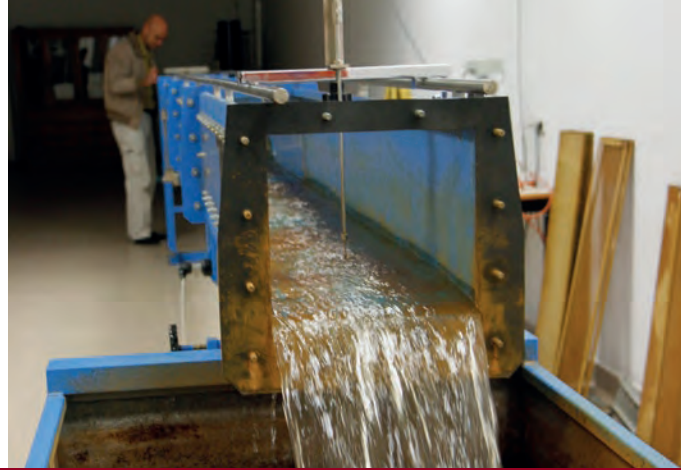
Business Management and Control

Financial Analysis

Financial Institutions Accounting
and Management

Management and Entrepreneurship

Taxation



Lisbon Engineering School

ISEL - Lisbon Engineering School, with origins in the Lisbon Industrial Institute, dates back to 1852 when it was founded by royal decree by Queen Maria II. Incorporated into IPL- Politécnico de Lisboa in 1988, ISEL is situated in the eastern part of Lisbon, in Marvila.

Educational activities at ISEL primarily focus on the area of engineering, research, development and innovation (RD&I) and community service.

ISEL emphasizes formal education (that which leads to a degree or diploma) as well as on continuing education, mainly in the classical areas of engineering.

Courses given at ISEL include a solid scientific and technological component accompanied by practical experiments in laboratories equipped with the latest technology and equipment.

Lisbon Engineering School has its own, mainly academic, teaching staff and works in conjunction with specialists in re-

search, industry and services, thus keeping its courses highly practical in nature.

RD&I initiatives, an essential part of engineering education, are very much present in ISEL reality. This is reflected in national and international projects in which the school is involved and by the patents and publications that the teaching staff and students have authored and co-authored.

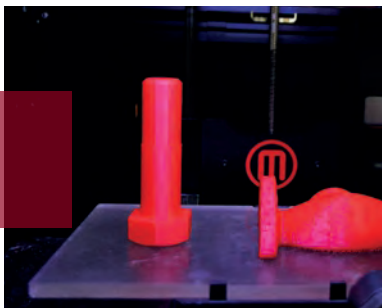
The international dimension of the school is clearly evident in student, teaching and non teaching staff mobility exchange programs through Erasmus+ as well as through classes for foreign students and participation in thematic networks.

ISEL student graduates possess wide-ranging skills, attitudes and expertise that allow them preferential consideration and lead to rapid incorporation into the labor market.

Furthermore, ISEL contributes to society as a whole by providing services that meet the specified requirements of industry, companies and services.



Lisbon Engineering School



ISEL
INSTITUTO SUPERIOR DE
ENGENHARIA DE LISBOA

CONTACTS

Rua Conselheiro Emídio Navarro, 1
1959-007 Lisboa
tel. + 351 218 317 000
licenciaturas@isel.pt
mestrados@isel.pt
www.isel.pt

UNDERGRADUATE PROGRAMS

Chemical and Biological Engineering
Civil Engineering
Clinical and Hospital Engineering
association with ESTeSL - Lisbon School of Health Technology
Computer Science and Computer Engineering
Electrical Engineering
Electronics and Telecommunications
and Computers Engineering
Informatics and Multimedia Engineering
Informatics Networks
and Telecommunications Engineering
Mathematics Applied to Technology
and Enterprise
Mechanical Engineering
Municipal Technologies and Management
Prosthetics and Orthotics
association with ESTeSL - Lisbon School of Health Technology
Urban Conservation and Rehabilitation

MASTERS PROGRAMS

Analysis and Control of Environmental Health Risks
association with ESTeSL - Lisbon School of Health Technology
Biomedical Engineering
association with ESTeSL - Lisbon School of Health Technology
Chemical and Biological Engineering
Civil Engineering
Communication Networks and Multimedia Engineering
Computer Science and Computer Engineering
Electrical Engineering
Electronics and Telecommunications Engineering
Mechanical Engineering
Quality and Environmental Engineering
Maintenance Engineering

POSTGRADUATE PROGRAMS

Acoustics
Conservation and Rehabilitation of Buildings
Engineering and Renewable Energy Management
Facility Management
Building Inspection, Assessment and Monitoring
Advanced Manufacturing Processes
Chemical Processes and Environmental Technology
Work Safety and Hygiene



Research, Development, Innovation and
Artistic Creation

Commitment to the production of knowledge

IPL- Politécnico de Lisboa believes that higher education is inextricably linked to Research, Development, Innovation and Artistic Creation (RDI&AC). These activities lead to the discovery of new knowledge and to the ongoing renewal of instruction. They further contribute to national development and the country's international reputation.

One of IPL's strategic objectives is to encourage the production of knowledge. This determination is reflected in the substantial increase in the quantity and quality of research conducted, as revealed in the number of national and international projects, patents, artistic productions and publications in which the teaching staff of our schools is involved.

IPL- Politécnico de Lisboa also makes an important contribution to society in the sphere of arts, through the creation and regular exhibition of art. Activities designed to broaden cultural horizons contribute to the social and cultural advancement of the metropolitan area of Lisbon as well as the country as a whole.

IPL is associated with several companies to create POLITEC&ID, an association for the development of knowledge and innovation, whose main objectives are to facilitate and promote research in a collaborative context, to stimulate entrepreneurship, to focus on education and

to promote national and international partnerships.

We are committed to encouraging our scientific community by creating conditions for the advancement of RDI&AC activities and to strive, whenever possible, to generate revenue from the results of this activity.

IPL has a host of centers and research groups that are well versed in scientific knowledge and in the arts. These units conduct research autonomously and in partnership with other educational institutions, research centers, the business community and with civil organizations.

IPL teaching staff participates in a significant way in external research units that are recognized by the Foundation for Science and Technology (FCT) and that form part of the university subsystem or are connected to it.

According to data compiled by the General Directorate of Educational and Scientific Statistics (2014), of the 410 professors in these circumstances distributed among 141 research units, about 30% are from IPL organic units.

The existing restriction on granting doctoral degrees has created difficulties for the development of IPL- Politécnico de Lisboa and is similarly responsible for the transfer of part of its teaching staff RDI&AC activities to universities.

Research Units

LDI&AC UNITS AT IPL- POLITÉCNICO DE LISBOA:

- Advanced Applications of Pulsed Power Research Group
- Arts and Communication Research Centre
- Autonomous Environments Research Group
- Calculus Centre
- CESEM Campus of IPL – Sociology and Aesthetics of Music Study Centre
- Chemical and Biotechnical Engineering Research Centre
- Chemical Engineering Studies Centre
- Civil Engineering Studies Centre
- Control and Application of Electric Machinery Research and Project Centre
- Electrical and Industrial Electronics Centre
- Electronics and Telecommunications Study and Development Centre
- Genetics and Metabolism Research Group
- Group for Research and Applications in Microelectronics, Optoelectronics and Sensors
- Health and the Environment Research Group
- Instrumentation and Control Centre
- Interdisciplinary Educational Studies Centre
- Lisbon Accounting and Business School Applied Research Centre
- Lisbon Institute of Media and Communication
- Mathematics Centre
- Mechanical Engineering Studies Centre
- Media Networks Group
- Modeling and Optimization of Multifunctional Systems Research Group
- Multimedia and Automatic Learning Group
- Physics Centre
- Radiation and Health Research Group
- Research and Energy Systems Group
- Research Group
- Systems and Telecommunications Electronics Research Group
- Technology and Information Systems Applied Research Group

EXTERNAL R&D UNITS WITH THE GREATEST NUMBER OF IPL TEACHING STAFF¹:

- Artistic Studies Research Centre
- Arts and Communication Research Centre (CIAC)
- Biological and Chemical Engineering Centre - CEBQ (IBQF)
- Business Research and Development Unit – UNIDE
- Cardiology Centre
- Chemistry and Biochemistry Centre
- Dom Luís Institute – DLI
- Education and Training Research and Development Unit
- Ethnomusicology Institute – Music and Dance Study Centre
- Geographical Study Centre – University of Lisbon
- INESC ID – Systems and Computer Engineering Institute - R&D in Lisbon
- Materials and Surface Science and Engineering Institute
- Mathematics and Applications Centre- CMA
- Mechanical Engineering Institute – IDMEC – IST Campus
- Media and Journalism Research Centre (CIMJ)
- National Academy of Orchestra
- National Laboratory of Civil Engineering – I.P.
- New Technologies Development Institute – UNINOVA
- Nova University of Lisbon Linguistics Centre
- Nuclear Physics Centre
- Sociology and Musical Aesthetics Study Centre
- Sociology Research and Study Centre (CIES)
- Statistics and Applications Centre
- Structural Chemistry Centre
- Technologies and Systems Centre - CTS
- Telecommunications Institute - IT
- University of Lisbon Linguistics Centre
- University of Lisbon Theoretical and Computational Physics Centre

1. DATA: Direção Geral de Estatísticas da Educação e Ciência (DGEEC) - DADOS DE 2014- External R&D units with the greatest number of IPL teaching staff



INTERNATIONALIZATION

Over 400 agreements

Internationalization is a strategic and evolving focal point at IPL- Politécnico de Lisboa.

We strive to project an international image through strengthening our existing partnerships and seeking out new forms of international cooperation.

Student, teaching staff and staff mobility within the Erasmus+ program has grown substantially in the past few years due to increasing interest on the part of the academic community, which has meant substantial investment in the organization and marked growth in this area of the internationalization process.

Today a student, teaching staff or staff member can choose among approximately 400 high-level partner institutions for his or her mobility experience.

Furthermore, with the goal of mobility in mind, there has been increasing interest in IPL, where students are offered classes in the English language at all of its units as well as instruction in Portuguese as a foreign language, in this way investing in the spread of the Portuguese language throughout the world using state-of-the-art language teaching resources.

Nowadays we also endeavour to attract international students who wish to embark on a comprehensive course of study at our schools and institutes.

We strive to educate community-minded citizens who have a wide general knowledge of the world and who are prepared to live and work in a global market.

In the area of research, development and artistic creation, IPL supports participation in international projects, facilitated by its presence in various prestigious international networks.

In this sphere, we believe that internationalization contributes to improving skills and to expanding international recognition of the institution in the global market of knowledge and the arts.

In terms of cooperation with member countries of the Community of Portuguese Speaking Countries (CPLP) and Macau, a long-standing tradition at IPL- Politécnico de Lisboa, a diversity of collaborative projects are ongoing or in development. This is reflected in the organization and design of graduate and postgraduate degree granting courses, as well as in the development of research and artistic creation projects.

Globalization has enriched the internationalization of higher education. We now utilize identical methods of organization and objectives with regard to learning, research and community relations throughout the world.

However, the internationalization of an institution of higher education should not be an end in itself so as not to run the risk of excessive conformity and the undesirable loss of project diversity.

At IPL- Politécnico de Lisboa we believe in internationalization as an institutional imperative, a powerful instrument for reflection, for the ongoing enhancement of our commitment and for the defining of our own identity.

Sharing of Experience

INTERNATIONAL THEMATIC NETWORKS IN WHICH IPL- POLITÉCNICO DE LISBOA PLAYS A ROLE

- **AEC** - Association Européenne des Conservatoires
- **ASIBEI** - Asociación Iberoamericana de Instituciones de Enseñanza de la Ingeniería
- **AULA CAVILA** - Campus Virtual Latino-Americano
- **BUSINET** - Global Business Education Network
- **CILET/ GEECT** - International Association of Film and Television Schools - Centre International de Liaison des Écoles de Cinéma et Télévision / Groupement Européen des écoles de Cinéma et Télévision
- **DIETS-EFAD** - European Federation of Association of Dietitians
- **EAA** - European Accounting Association
- **EAEC** - European Association of Erasmus Coordinators
- **EAIE** - European Association for International Education
- **EANBMS** - European Academic Network of Biomedical Sciences
- **ECREA** - European Communication Research and Education Association
- **EdE** - European Network of Theatre Schools - École des Écoles
- **EFRS** - European Federation of Radiographers
- **ELIA** - European League of Institutes of the Arts
- **ENOA** - European Network of Opera Academies
- **ENPHE** - European Network of Physiotherapy in Higher Education
- **EPBS** - European Association for Professions in Biomedical Science
- **EUPRERA** - European Public Relations Education and Research Association
- **HENRE** - Higher Education Network for Radiography in Europe
- **IFEH** - International Federation of Environmental Health - Academic Associate
- **RACS** - Rede Académica das Ciências da Saúde da Comunidade dos Países de Língua Portuguesa (Academic Network of Health Sciences of the Community of Portuguese Language Countries)
- **RETS** - International Network of Health Technician Education
- **SEFI** - European Society for Engineering Education



ENTREPRENEURSHIP

We support good ideas

IPL- Politécnico de Lisboa considers entrepreneurship a formative and strategic mission. We have a long-standing tradition of cooperation with the business community and with society as a whole, responding to new challenges in the areas of arts, education, health sciences, business sciences, communication and engineering. This commitment is reflected in state-of-the-art entrepreneurial training with the latest techniques and a solid scientific and experimental foundation.

IPL participates in numerous networks and promotes the development of projects with businesses and public entities, while at the same time seeking to stimulate entrepreneurial initiatives, supporting the launch of startups and facilitating their success.

The value passed along to society in the form of products, services and human capital substantiates IPL educational endeavours as well as its investment in skills acquisition and the consolidation of knowledge. In this way, work carried out in academic and research contexts becomes a force for stimulating real development. In keeping with this strategy, IPL- Politécnico de Lisboa has implemented structures and designed initiatives to encourage innovation, entrepreneurship and employment.

IPL is committed to promoting strategic partnerships and to participating in national and international Research, Development, Innovation and Artistic Creation (RDI&AC) projects.

Also participates in Poliempreende, a national entrepreneurship network that encourages the exchange of ideas and business projects in polytechnic higher education.

This initiative aims to encourage and stimulate the entrepreneurship of our students and maximize business opportunities through creating self-employment options. Companies such as Ahua Surf Within, Bad Behavior, Belmont and Cardiorespira are some of the successful businesses that have benefitted from participating in Poliempreende through their association with IPL- Politécnico de Lisboa.

Along with Poliempreende, a series of entrepreneurship seminars are conducted, namely in the area of motivating ideas, and in business and financial planning with a view to encouraging ideas that can result in the creation of new projects and candidatures.

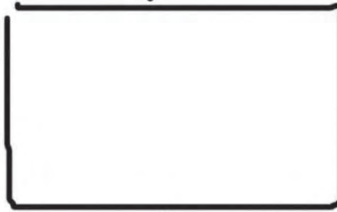
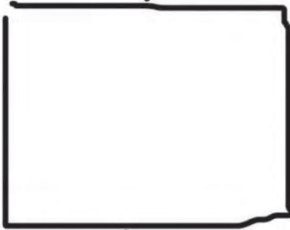
In order to enhance the knowledge of its qualified professional graduates, IPL maintains a partnership with the Association for Specific Business Opportunities (OPEN), through its investment in an entrepreneurship campus at Lisbon Engineering School, one of its units.

While operating as an incubation centre, OPEN served as a launch pad for several startups originally linked to development projects in the context of POLITE&ID, the Lisbon association for the development of knowledge and innovation that includes IPL- Politécnico de Lisboa and a series of prominent businesses in different areas of the national context. These include the companies Daily Work (research and development), MakeWise (information systems engineering), João Paulo Sá (management and consulting, a single member limited company) and Exploitsys (information technologies).

QUALIDADE
QUALITY

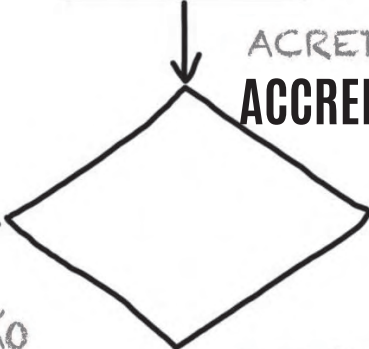


CERTIFICAÇÃO
CERTIFICATION

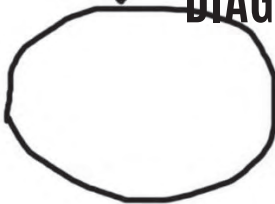


SUCESSO
SUCCESS

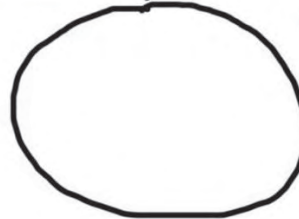
ACREDITAÇÃO
ACCREDITATION



SATISFAÇÃO
FULFILLMENT



DIAGNÓSTICO
DIAGNOSIS



COMPROMETIMENTO
COMMITMENT



QUALITY

Commitment to Guaranteed Quality

IPL - Politécnico de Lisboa together with its schools are firmly committed to a policy of guaranteed quality in all of its activities, continually refining its actions and enhancing the organization and management of all processes necessary for performing its institutional functions.

From the moment internal systems of guaranteed quality came into existence, IPL elected to create its own, progressively developing measures to improve its performance and bring its procedures in line with European Standards and Guidelines 2015 - (ESG-2015). This system is accredited by the Agency for Evaluation and Accreditation of Higher Learning. In addition, the presidency and social services are certified by Norma NP EN ISO 9001:2008, the goal being to extend this certification to the administrative processes of the various units.

IPL inspires and encourages a culture of quality in all of its actors, not only with a view to diagnosing, correcting and improving performance, but also in order to gain external recognition of its activities through evaluation and certification on a national and international level.

As the driving force in promoting a culture of quality in all of its structures, IPL- Politécnico de Lisboa adopts the following as the main vehicles of its mission in the organization and coordination of its activities:

- ◆ To implement in all of its units a common method of control, strategic planning, identification and production of indicators for the analysis of results and the ongoing refinement of activities;

- ◆ To monitor intra-institutional relations, improving cohesion within IPL- Politécnico de Lisboa body, always respecting the diversity that characterizes joint interdisciplinary actions among the various fields of knowledge;

- ◆ To provide support to its units in accordance with IPL strategic development plan as these units pursue their individual strategic objectives; in this way, to encourage educational excellence that is strongly rooted in research of outstanding quality;

- ◆ To monitor interaction of IPL and its units with the community, namely in terms of providing services and resolving issues within its areas of expertise, working to solve problems that the community puts forward;

- ◆ To monitor the implementation of the strategic plan for internationalization, enhancing the quality of IPL relations with its institutional counterparts in order to increase the number of mobility events for all of its actors; to monitor participation in thematic networks and efforts to attract foreign students;

- ◆ To support the development of an innovative, entrepreneurial spirit at the institution;

For IPL- Politécnico de Lisboa, the guarantee of quality and the ongoing enrichment of its actions is a comprehensive goal for its entire staff, from presidency services to those of the organic units as well as for the entire structure that supports its pedagogical and scientific activity.



SOCIAL SERVICES

Students' second family

“In its relationship with students, the state guarantees a system of academic social services that supports access to higher education and successful integration, with the inclusion of financially challenged students who have an acceptable academic record” – Law N° 62/2007 of September 10, – Legal Statute for Institutions of Higher Education.

In this context, IPL- Politécnico de Lisboa incorporates Social Services – SAS/IPL within its structure, whose mission it is to implement social policies that are defined for higher education. This involves supporting and providing the benefits therein stipulated, to students who attend IPL- Politécnico de Lisboa and to invest in the ongoing improvement of study conditions.

The institutional vision of the SAS/IPL is to become students' “other family”, taking an interest in their activities and fostering new relationships with the student population and the community at large.

With their headquarters at IPL Benfica Campus, this organization enjoys legal administrative and financial autonomy, operating autonomously and impartially as a partner of IPL- Politécnico de Lisboa and its units.

Direct support – the awarding of scholarships – is performed exclusively by electronic means through a computer platform furnished by the General Directorate of Higher Education.

In terms of indirect support, it has 6 food units at which IPL students have access to meals at reduced prices and

subsidised lodging in a 200-bed residential unit located on Lisbon Engineering School campus.

To meet the needs of students' eating routines and tendencies, the SAS/IPL has created the concept “Food from Home”, supplying spaces for those who wish to bring their own meals.

It is important to mention that lodging is designed primarily for students who come from far away, for those who have been awarded scholarships and for those who are unable to find housing elsewhere. This is especially relevant in the case of Erasmus⁺ and international students.

The Social Services – SAS/IPL has also sought to expand the supply of student lodging through an agreement with the Amadora City Hall – “Solidarity Across Generations”, through which IPL students find lodging in the homes of senior citizens.

In keeping with its vision to become students' other family, the Social Services – SAS/IPL fosters close ties with IPL Academic Federation and student associations by supporting sports and cultural events in an ongoing search for solutions to the many challenges with which it is presented.

The Social Services – SAS/IPL is aware of how difficult it is for students to adapt to a new social and academic context, especially when they are far from home and family. With this in mind, it has created a psychology office for the use of all IPL students.



OCCUPATIONAL HEALTH

Promoting health in the workplace

IPL- Politécnico de Lisboa, in accordance with existing legislation, provides occupational health services for its teaching staff and non-teaching staff.

This is an innovative project on a national level, in which IPL- Politécnico de Lisboa makes use of material and human resources from one of its units, ESTeSL - Lisbon School of Health Technology to ensure compliance with existing legal requisites for occupational health.

The mission of **IPL Occupational Health Service's** is to promote health at the workplace through risk management and the implementation of measures to minimize or eliminate exposure to professional risk factors, thereby contributing to the lifelong physical and mental health of its employees.

Furthermore, this service is dedicated to informing and educating workers about workplace health and safety, consulting with and educating workers' representatives about workplace health and safety, creating technical conditions to ensure the application of recommended preventative measures and creating new research projects in association with other areas of knowledge.

In the pursuit of these objectives, IPL- Politécnico de Lisboa meets the requirements of the European Strategy for Health and Safety in the Workplace, established for the period of 2013/2020, which focuses on prevention and management of professional risk factors that affect the skeletal muscular system and those in the psychosocial sphere.

The focus is also on the ongoing improvement of quality in services dealing with workplace health and safety and in the reduction of workplace accidents by ensuring the implementation of these measures at job sites.

Users of the Occupational Health Services can also have clinical tests performed onsite once these have been prescribed by attending doctors.

Within the scope of its activities, this services also has the ability to create and develop programs for the promotion of workplace health, safety and disease prevention, namely and among others, programs for diet and nutrition, physiotherapy, smoking cessation and psychosocial risk factors.

With regard to services provided through external agreements, the Occupational Health Services has technical and scientific personnel available. These are duly qualified, recognized and certified by the Directorate General Health (DGS) and by the Working Conditions Authority (ACT), in accordance with legislation in effect.

The occupational health team is composed of a workplace doctor, a senior work safety technician, a cardiopulmonary technician, an orthoptist, a clinical analysis and public health technician, a workplace nurse and a clinical secretarial technician.

IPL Occupational Health Services operates from the Lisbon School of Health Technology and the Lisbon School of Education at the Benfica campus.



IPL ACADEMIC FEDERATION

We are all IPL

IPL- Politécnico de Lisboa recognizes the important role played by student organizations at its units in encouraging the institute's academic spirit, helping with the assimilation of new students into the academic world and promoting activities for the education of the complete individual.

The student associations of IPL are gathered together to form **FAIPL - Politécnico de Lisboa Academic Federation**, which represents 13 000 students studying in eight different units.

FAIPL, as the coordinating body of the student movement, was founded in 2013 with the objective of bringing students together and promoting cohesion among members of IPL academic community.

At the present moment, the organization promotes activities that range from education to cultural, recreational and sports events.

IPL Academic Federation focuses heavily on supporting sports events through representation in various individual events along with national and international university group competitions, in which outstanding results have been achieved in several divisions. In 2016 FAIPL participated for the first time in the European University Championships held in Croatia.

In the practice of sports at the highest level, FAIPL supports students in a host of different sports: handball (male and female), rugby, volleyball (male and female), korfbal, female indoor soccer, roller hockey and individual events. It provides

the conditions for athletic achievement and promotes its representatives in university competitions at the highest level.

Besides investing in sports, the initiatives that most clearly reflect the dynamic nature of FAIPL are the welcoming sessions for new students, "I am IPL", a co-organization with IPL- Politécnico de Lisboa, IPL gathering of musical groups ("Tunas") and educational activities promoted with IPL and with IPL Social Services. It also plays an important role through its collaboration with the student ombudsman.

From the time it was founded, FAIPL has presented to the presidency of IPL- Politécnico de Lisboa and to its Social Services, a series of proposals and initiatives that have created conditions for students to participate in high level sporting activities while pursuing their academic studies, an example of this being the awarding of sports scholarships.

FAIPL also sponsors recreational activities, promoting a spirit of union and social interaction. Among other partnerships and initiatives designed for students and for academic associations is the renowned IPL Street Party that takes place at the end of each academic year as well as IPL participation in Lisbon Academic Week.

FAIPL plays a crucial role in creating a sense of identity and a connection with IPL name.

IPL Academic Federation activities can be followed on social media and platforms that are easily available to all young people.



A COMMUNITY




FULL OF LIFE




*We are science
and art,
We are wisdom
and experience*

IPL- POLITÉCNICO DE LISBOA

Estrada de Benfica, 529
1549-020 Lisboa Portugal
Tel. +351 217 101 200
www.ipl.pt
geral@sp.ipl.pt

 www.facebook.com/politecnicodelisboa

 www.youtube.com/user/PolitecnicoLisboa

 flickr

© PUBLISHED BY THE LISBON POLYTECHNIC INSTITUTE
COMMUNICATION AND IMAGE DEPARTMENT - MAY 2017